

Reissued: 16-Jul-03

Model: Model U-C1 Paper Tray Unit (PS510)	Date: 19-Jun-03	No.: MB456001a
---	-----------------	----------------

MB Correction

The items in bold italics have been corrected or added.

Modified Article: Stand		Prepared by: Y.Urushihara	
From: 1st Tech. Support Sec. Service Support Dept.			
Reason for Modification:	<input type="checkbox"/> Parts catalog correction	<input checked="" type="checkbox"/> Vendor change	<input type="checkbox"/> To meet standards ()
	<input type="checkbox"/> To facilitate assembly	<input type="checkbox"/> To improve reliability	
	<input type="checkbox"/> Part standardization	<input type="checkbox"/> Other	

The following have been changed due to a vendor change.

Old part number	New part number	Description	Q'ty	Int	Page	Index	Note
G5696160	B4566160	Front Stand	1	X/O	3	1	
G5696161	B4566161	Rear Stand	1	X/O	3	2	

RCL (Japan) Production

Model	V/Hz	Destination	Code	Serial Number
PS510	120/60	All RICOH subsidiaries, NRG, SAVIN	B456-17	J3930400001
PS510	220-240/50, 60	Infotec	B456-26	6P50430001

Model: Model U-C1 Paper Tray Unit (PS510)	Date: 25-Sep-03	No.: MB456002
---	-----------------	---------------

Modified Article: Heater Harness		Prepared by: S. Tomoe	
From: 1st Tech. Support Sec. Service Support Dept.			
Reason for Modification:	<input checked="" type="checkbox"/> Parts catalog correction	<input type="checkbox"/> Vendor change	<input type="checkbox"/> To meet standards ()
	<input type="checkbox"/> To facilitate assembly	<input type="checkbox"/> To improve reliability	
	<input type="checkbox"/> Part standardization	<input type="checkbox"/> Other	

Please apply the following corrections to your Parts Catalogs.

Old part number	New part number	Description	Q'ty	Int	Page	Index	Note
B5685340	B4565340	Heater Harness	1-1		4	20	

Model: Model U-C1 Paper Tray Unit (PS510)	Date: 22-Mar-05	No.: MB456003
---	-----------------	---------------

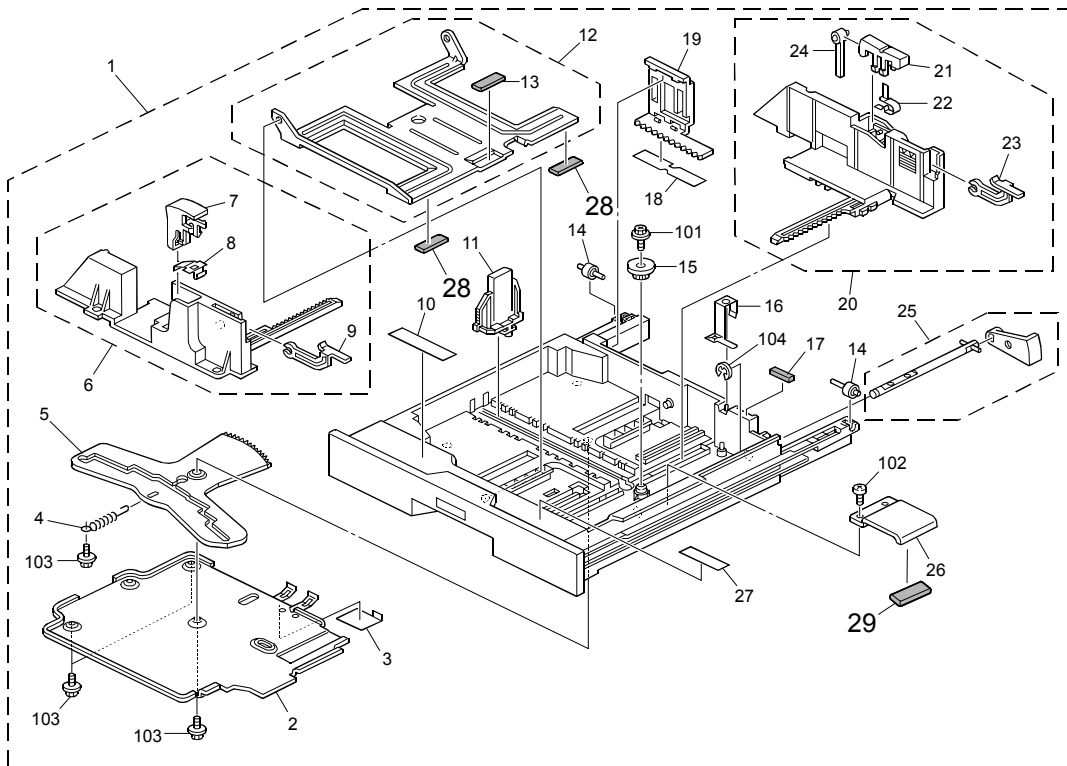
Modified Article: Cushions		Prepared by: S. Tomoe	
From: 1st Tech. Support Sec. Service Support Dept.			
Reason for Modification:	<input type="checkbox"/> Parts catalog correction	<input type="checkbox"/> Vendor change	<input type="checkbox"/> To meet standards ()
	<input type="checkbox"/> To facilitate assembly	<input type="checkbox"/> To improve reliability	
	<input type="checkbox"/> Part standardization	<input checked="" type="checkbox"/> Other	

Old part number	New part number	Description	Q'ty	Int	Page	Index	Note
	G3132787	Cushion – Bottom Plate	0-2		5	28	
	G3132788	Cushion – Base -2	0-1		5	29	

Change: The parts in the table were added.

Reason: To minimize the sound that occurs when the operator pulls out the paper tray.

Note: This sound comes from the bottom plate and lift bracket.



RCL (Japan) Production

Model	V/Hz	Destination	Code	Serial Number
PS510	120/60	All RICOH subsidiaries, NRG, SAVIN	B456-17	J3930901533
PS510	220-240/50,60	Infotec	B456-26	6P50930455

Model: Model U-C1 Paper Tray Unit (PS510)	Date: 22-Mar-05	No.: MB456004
---	-----------------	---------------

Modified Article: Torque Limiter		Prepared by: S. Tomoe	
From: 1st Tech. Support Sec. Service Support Dept.			
Reason for Modification:	<input type="checkbox"/> Parts catalog correction	<input type="checkbox"/> Vendor change	<input type="checkbox"/> To meet standards ()
	<input type="checkbox"/> To facilitate assembly	<input type="checkbox"/> To improve reliability	
	<input type="checkbox"/> Part standardization	<input checked="" type="checkbox"/> Other	

Old part number	New part number	Description	Q'ty	Int	Page	Index	Note
G0602900	B1802900	Torque Limiter – 40MN.M:MM18	1-1	O/O	7	22	

Change: The material for this part was changed to a more environmentally friendly type.

Reason: This is part of Ricoh's ongoing application of in-house environmental standards.

Model: Model U-C1 Paper Tray Unit (PS510)	Date: 22-Mar-05	No.: MB456005
---	-----------------	---------------

Modified Article: Rollers		Prepared by: S. Tomoe	
From: 1st Tech. Support Sec. Service Support Dept.			
Reason for Modification:	<input type="checkbox"/> Parts catalog correction	<input type="checkbox"/> Vendor change	<input type="checkbox"/> To meet standards ()
	<input type="checkbox"/> To facilitate assembly	<input checked="" type="checkbox"/> To improve reliability	
	<input type="checkbox"/> Part standardization	<input type="checkbox"/> Other	

Old part number	New part number	Description	Q'ty	Int	Page	Index	Note
AF030049	AF030085	Pick-up Roller	1-1	X/O	7	2	
AF031049	AF031085	Feed Roller	1-1	X/O	7	14	
AF032049	AF032085	Separation Roller	1-1	X/O	7	23	
G5682650	G5682665	Paper Feed Unit	1-1	X/O	7	1	

Change: The material for these parts was changed.

Reason: To further improve the reliability of the parts.

Model: Model U-C1 Paper Tray Unit (PS510)	Date: 22-Mar-05	No.: MB456006
---	-----------------	---------------

Modified Article: Control Board		Prepared by: S. Tomoe	
From: 1st Tech. Support Sec. Service Support Dept.			
Reason for Modification:	<input type="checkbox"/> Parts catalog correction	<input type="checkbox"/> Vendor change	<input type="checkbox"/> To meet standards ()
	<input type="checkbox"/> To facilitate assembly	<input type="checkbox"/> To improve reliability	
	<input type="checkbox"/> Part standardization	<input checked="" type="checkbox"/> Other	

Old part number	New part number	Description	Q'ty	Int	Page	Index	Note
B4565100	B4565115	Control Board	1-1	O/O	9	7	

Change: The materials for the board were changed to more environmentally-friendly types.

Reason: This is part of Ricoh's ongoing application of in-house environmental standards.

Reissued: 12-Apr-05

Model: Model U-C1 Paper Tray Unit (PS510)	Date: 22-Mar-05	No.: MB456007a
---	-----------------	----------------

MB Correction

The items in bold italics have been corrected or added.

Modified Article: Vertical Guide		Prepared by: S. Tomoe	
From: 1st Tech. Support Sec. Service Support Dept.			
Reason for Modification:	<input type="checkbox"/> Parts catalog correction	<input type="checkbox"/> Vendor change	<input type="checkbox"/> To meet standards ()
	<input type="checkbox"/> To facilitate assembly	<input type="checkbox"/> To improve reliability	
	<input type="checkbox"/> Part standardization	<input checked="" type="checkbox"/> Other	

Old part number	New part number	Description	Q'ty	Int	Page	Index	Note
A2322785	<i>B0822785</i>	Vertical Guide	1-1	O/O	7	38	

Change: The position of the Mylar on the vertical guide was changed.**Reason:** To minimize paper jams that occur when feeding curled paper.

Reissued: 12-Apr-05

Model: Model U-C1 Paper Tray Unit (PS510)	Date: 22-Mar-05	No.: MB456008a
---	-----------------	----------------

MB Correction

The items in bold italics have been corrected or added.

Modified Article: Heater Harnesses		Prepared by: S. Tomoe	
From: 1st Tech. Support Sec. Service Support Dept.			
Reason for Modification:	<input type="checkbox"/> Parts catalog correction	<input type="checkbox"/> Vendor change	<input type="checkbox"/> To meet standards ()
	<input type="checkbox"/> To facilitate assembly	<input type="checkbox"/> To improve reliability	
	<input type="checkbox"/> Part standardization	<input checked="" type="checkbox"/> Other	

Old part number	New part number	Description	Q'ty	Int	Page	Index	Note
B4565340	B4565350	Heater Harness	1-1	O/O	3	20	
	<i>B4565360</i>	Heater Sub Harness	0-1		3	44	

Changes:

- 1) The material of the I/F harness (heater harness) was changed to a more environmentally-friendly type.
- 2) A relay harness was added (heater sub harness).

Reasons:

- 1) This is part of Ricoh's ongoing application of in-house environmental standards.
- 2) So that the LCT can connect to the mainframe PSU.

Note: The position of the LCT connector on the TH-C1 PSU is different from the previous model.

